

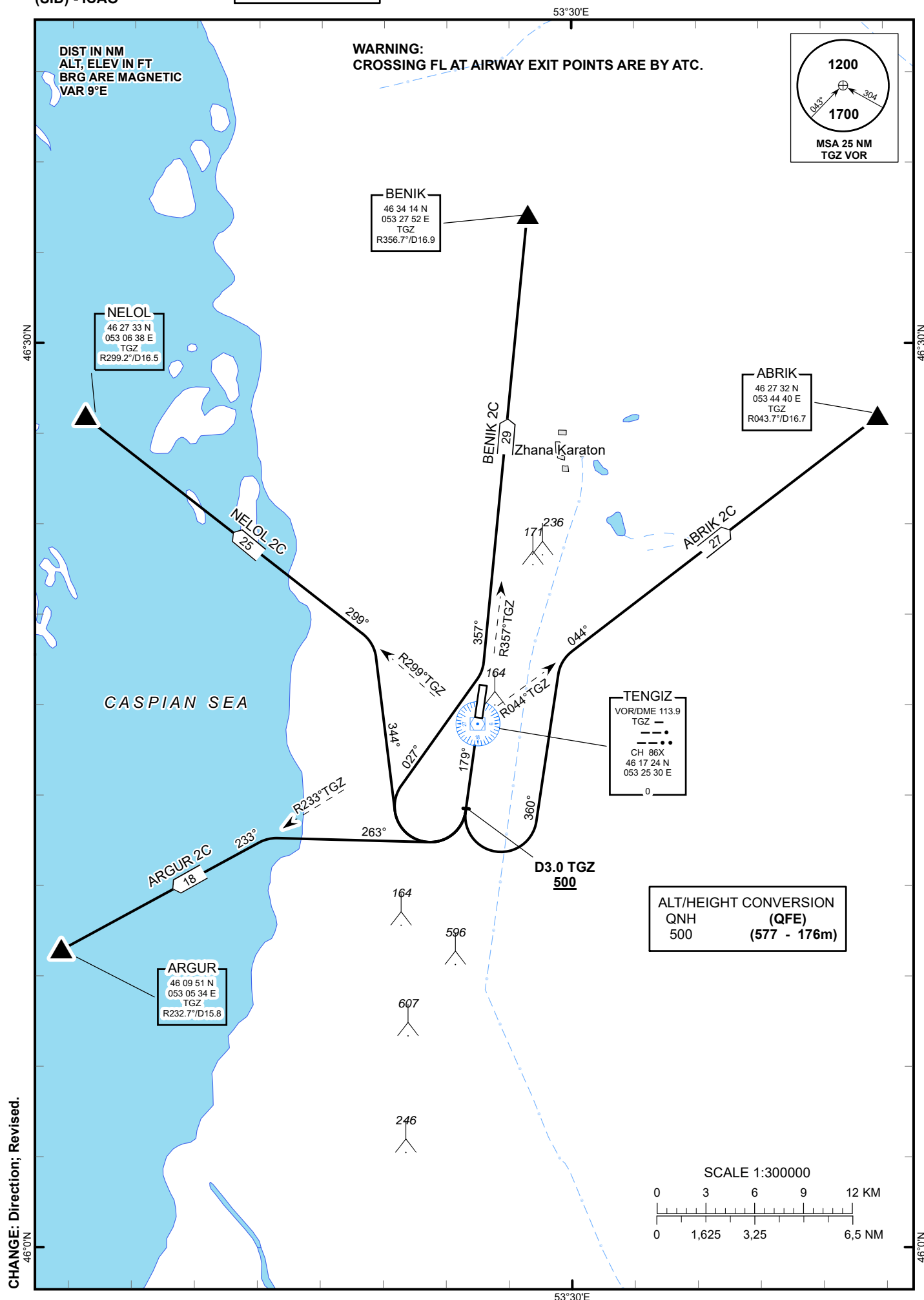
STANDARD DEPARTURE
CHART - INSTRUMENT
(SID) - ICAO

TRANSITION ALTITUDE
10000 FT

TENGIZ TOWER 119.20

ABRIK 2C, ARGUR 2C,
BENIK 2C, NELOL 2C.

TENGIZ
RWY 18



STANDARD DEPARTURE ROUTES - INSTRUMENT (SID) TENGIZ RWY 18

ARGUR 2C

After take-off climb straight ahead to 500 or above. At 3NM TGZ turn RIGHT on track 263° until intercept R233°TGZ, then proceed on track 233° to ARGUR (N460951 E0530534).
--

NELOL 2C

After take-off climb straight ahead to 500 or above. At 3NM TGZ turn RIGHT on track 344° until intercept R299°TGZ, then proceed on track 299° to NELOL (N462733 E0530638).
--

BENIK 2C

After take-off climb straight ahead to 500 or above. At 3NM TGZ turn RIGHT on track 027° until intercept R357°TGZ, then proceed on track 357° to BENIK (N463414 E0532752).
--

ABRIK 2C

After take-off climb straight ahead to 500 or above. At 3NM TGZ turn LEFT on track 360° until intercept R044°TGZ, then proceed on track 044° to ABRIK (N462732 E0534440).
